



Balance Series

The Peplink Balance Series is a complete Internet Link Load Balance solution suite that caters to a diverse range of business environments, from Home Offices up to Large Enterprises, and consists of the Balance 200, 300, 210, 310, 380, 390 and 710 Models.

Protect Your Business Continuity

With on-line business communication and transactions being commonplace, reliable high-speed Internet access has become business-critical.

The Peplink Balance series helps protect your business continuity by seamlessly connecting your business to the Internet through multiple independent links, and intelligently managing the links to provide automatic failover and enhanced performance.

Simple deployment and out-of-the-box functionality facilitate a rapid return on investment; compatibility with commonly available and economical types of Internet links, for example Cable and DSL, keeps running costs under control.

Peplink Balance 200/300



- ▶ Up to 3 Internet Links
- ▶ Home Office to Small Business Environments

Peplink Balance 210/310



- ▶ Up to 3 Internet Links
- ▶ Small to Medium Business Environments

Peplink Balance 380/390



- ▶ Up to 3 Internet Links
- ▶ Small to Medium Business Environments

Peplink Balance 710



- ▶ Up to 7 Internet Links
- ▶ Medium to Large Business Environments

Peplink Balance Series

Enhance Performance. Increase Uptime.

Enterprise-scale Link Aggregation and Outbound Load Balance

With Balance 200/210, 300/310/380/390, and 710, connect up to 2, 3, and 7 Internet links, respectively. Bandwidth combination enhances throughput; multiple Internet links provide redundancy and improve network availability.

Intelligent Health Checks and Automatic Failover

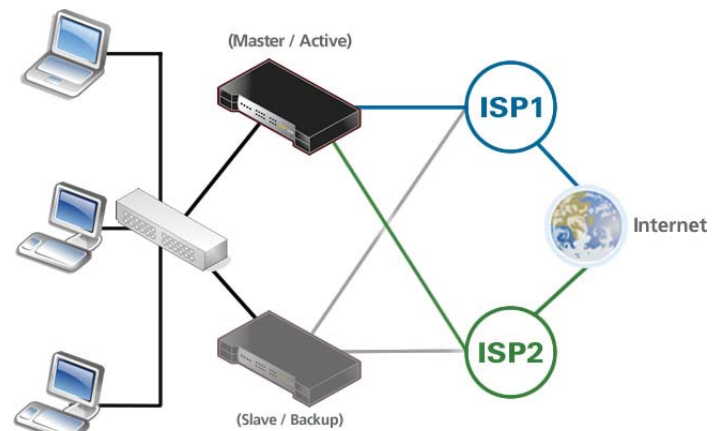
Regular health checks ensure up-to-date link statuses. In case of a link failure, Peplink Balance automatically re-routes traffic to a healthy link to provide continuous Internet service.

Hardware 1+1 Backup (High Availability)

A pair of Peplink Balance units can be deployed in an Active / Hot-standby HA hardware configuration via VRRP, Virtual Router Redundancy Protocol. When the Active unit fails, the Hot-standby unit becomes active, and provides continuous service.

Per-service Load Distribution / Weight Control

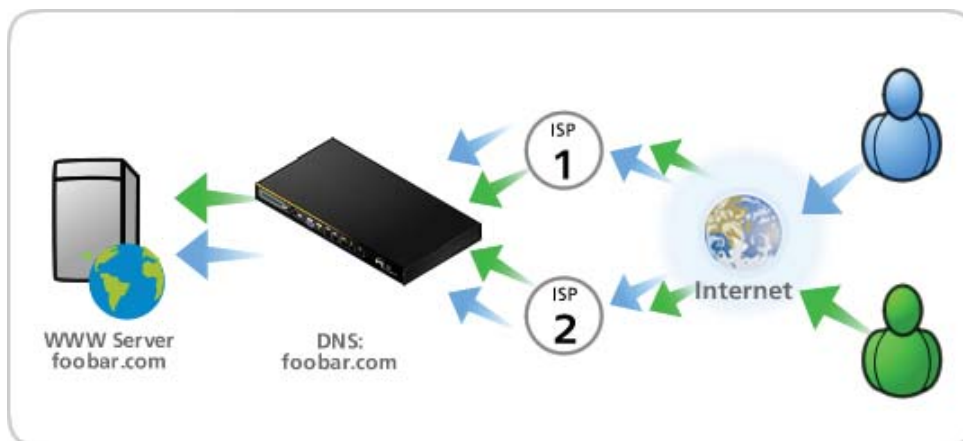
Outbound traffic can be distributed across available Internet links based on adjustable proportions using Outbound Traffic Manager. Proportions among various traffic types can be independently configured according to protocol and port number.



Dual Peplink Balance units support a High Availability configuration via VRRP.

Built-in DNS Server with Inbound Load Balance

A built-in authoritative DNS server supports MX, NS, A, CNAME, and TXT records. DNS resolution balances inbound requests among available links, which allows you to host server without data traffic congestion.



Peplink Balance has built-in DNS server and allows you to load balance incoming traffic.

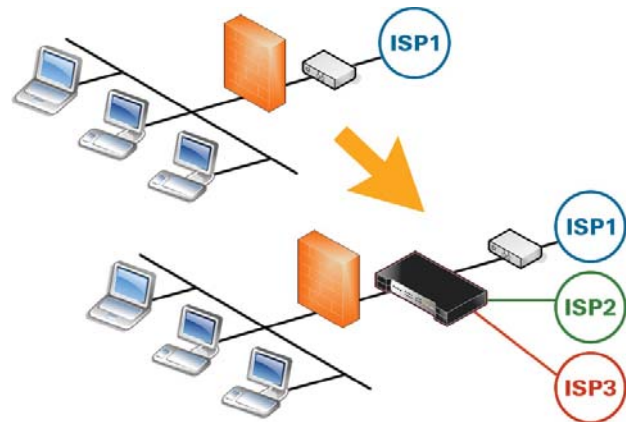
Install with Ease. Rest Assured.

Drop-in Mode

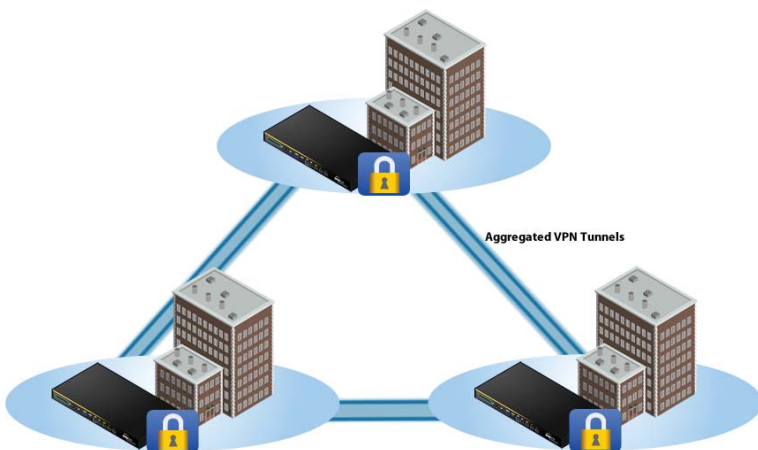
With Drop-in Mode, the installation of Peplink Balance does not require any changes in network configuration. Installation of Peplink Balance via Drop-in Mode is best suited for customers with an existing router and firewall.

VPN Load Balancing

Peplink Balance features VPN Load Balancing for multiple sites on selected models. This allows you to form a secure redundant centralized network among multiple locations with ease.



A Peplink Balance can be "dropped-in" between a firewall and router; additional Internet links are subsequently added.



Connect to other locations securely by creating multiple VPN tunnels; traffic will failover when Internet connection fails.

Quality of Service

Peplink Balance intelligently detects and transparently manages voice sessions across all of the available Internet links. Quality of Service (QoS) will prioritize your traffic to provide a consistent throughput of audio, video and other delay-sensitive traffic, resulting in better VoIP and Video streaming.

Be in Control.

Session Persistence / Binding

Peplink Balance supports Internet services, such as secure web, that require clients to maintain the same IP address throughout a session.

Advanced Firmware Architecture

Dual firmware modules onboard Balance 200, 300, 210 & 310, and 2GB of flash memory onboard Balance 380, 390 & 710 accommodate multiple firmware versions, and provide redundancy to increase firmware upgrade flexibility and reduce risk.



Peplink Balance contains VoIP specific features to improve your VoIP sound quality and make clearer voice call.

Balance Series Specifications

Functionality and Compatibility

LAN	<ul style="list-style-type: none">• Built-in DHCP Server for LAN Clients
WAN	<ul style="list-style-type: none">• DHCP, PPPoE, GRE, and Static IP• Inbound and Outbound Link Load Balance
Routing	<ul style="list-style-type: none">• Drop-in Mode and NAT• Flexible Custom Outbound Routing Policy
DNS Server	<ul style="list-style-type: none">• Built-in authoritative DNS server with support for MX, NS, A, CNAME, and TXT records
Security	<ul style="list-style-type: none">• Rules-based Stateful Firewall, with IP, Protocol, and Port Filtering• VPN Encryption: 256-bit AES• Intrusion Detection System
Device Management	<ul style="list-style-type: none">• Wizard & Menu Driven Web Management Interface over HTTP / HTTPS• Remote Reporting and Management• Configuration Upload and Download

Hardware Specification

LAN Interface	<ul style="list-style-type: none">• Balance 200/300: 1 x 4-Port 10/100Mbps Ethernet Switch• Balance 210/310: 1 x 4-Port 10/100Mbps Ethernet Switch• Balance 380: 1 x 10/100Mbps Ethernet Port• Balance 390/710: 1 x 10/100/1000Mbps Gigabit Ethernet Port
WAN Interface	<ul style="list-style-type: none">• Balance 200/210: 2 x 10/100Mbps Ethernet Ports• Balance 300/310/380: 3 x 10/100Mbps Ethernet Ports• Balance 390: 3 x 10/100/1000Mbps Gigabit Ethernet Ports• Balance 710: 7 x Ethernet Ports (3 x 1Gbps, 4 x 100Mbps)
Universal AC Power Adapter	<ul style="list-style-type: none">• 100-240V
Power Consumption	<ul style="list-style-type: none">• Balance 200/300: 3.1W (Max.)• Balance 210/310: 14 W (Max.)• Balance 380/390: 50 W (Max.)• Balance 710: 70W (Max.)
Certifications	<ul style="list-style-type: none">• FCC, CE

Form Factor and Miscellaneous

Dimensions (W x D x H)	<ul style="list-style-type: none">• Balance 200/300: 24.3 cm x 15.9 cm x 3.2 cm / 9.57" x 6.25" x 1.26"• Balance 210/310: 29.3 cm x 15.9 cm x 4.4 cm / 11.6" x 6.25" x 1.72"• Balance 380/390: 1U Rackmount Chassis 42.6 cm x 23.0 cm x 4.4 cm / 16.8" x 9.1" x 1.72"• Balance 710: 1U Rackmount Chassis 42.6 cm x 37.9 cm x 4.4 cm / 16.8" x 14.9" x 1.72"
Weight	<ul style="list-style-type: none">• Balance 200/300: 550 g / 1.2 lb• Balance 210/310: 1.2 kg / 2.6 lb• Balance 380/390: 3.5 kg / 7.6 lb• Balance 710: 5.5 kg / 12.1 lb
Operating Environment	<ul style="list-style-type: none">• Balance 200/300/210/310: Operating Temperature: 0°C to 50°C / 32°F to 122°F Relative Humidity: 10% to 90% (Non-condensing)• Balance 380/390/710: Operating Temperature: 0°C to 40°C / 32°F to 104°F Relative Humidity: 10% to 90% (Non-condensing)
Warranty	<ul style="list-style-type: none">• One-year Limited Warranty

About Peplink

Peplink is the proven market leader in delivering Internet link load balancing solutions. Headquartered in Hong Kong, Peplink's products have been deployed by service providers, public safety agencies, city governments and enterprise customers around the world. As an innovative creator of technology solutions, Peplink operates globally with offices in North America and Asia in cooperation with distributors, system integrators, ODM (Original Design Manufacturer) partners and strategic alliance partners.

www.peplink.com

©2008 Peplink International Ltd. Peplink and the Peplink logo are trademarks of Peplink International Ltd. Other brands or products mentioned may be trademarks or registered trademarks of their respective owners.

This document does not create any express or implied warranty about Peplink or about its products or services. Peplink's sole warranty is contained in its product warranty. Peplink has made reasonable efforts to verify that the information contained herein is accurate, but Peplink assumes no responsibility for its use or any infringement of patents or other rights of third parties that may result. The customer is solely responsible for verifying the suitability of Peplink's products for its use.

Specifications are subject to change without prior notice. Please visit our website for accurate and update specifications.

